



matthew smith architectural photography

With the growing popularity of social media and online design journals, architectural photographs are an essential publicity tool - perhaps the best way to showcase the design talents of a practice to potential clients.

With a vast quantity of ideas and images instantly available, the way we research and consume design has changed. Now more than ever, the quality of the image conveyed is incredibly important.

Many architects tend to sell themselves short when it comes to documenting and publicising their finished, built works. All too often, the importance of making a considered photographic record gets forgotten in the rush to finish a project.

Matthew Smith Architectural Photography offers professional photography of architecture and interiors at realistic, affordable rates.



Stone Farm, Private Residence, Lavenham
Wincer Kievenaar Architects

Matthew Smith BA (Hons) DIPL Arch

Nominated for
RIBA President’s Silver Medal
RIBA President’s Bronze Medal

Winner of
RIBA Hampshire Student Prize
Dibben Prize for Architecture
Undergraduate Exhibition Prize
Architecture PLB Sustainability Prize

Matthew Smith is a freelance architectural photographer based in Suffolk. He studied architecture to post-graduate level and is RIBA part II qualified. Since graduating with First Class Honours and Distinction from the University of Portsmouth in 2009, he has worked for a number of award-winning small practices in Suffolk and Cambridgeshire as a part II architect assistant.

Using his professional experience of architectural design, he works with practices to visually document their built, completed works for commercial and publication purposes. Combining an eye for detail and composition with strong technical competence, he uses specialist photographic equipment to produce professional results.

www.matthewsmitharchitecture.com

Contents 05

Residential	The Dune House	08
	Stone Farm	12
	Accordia Housing	16
	Valley Farm House	20
	Rivercote	26
	Preston Manor	32
	Mill Lane	36
	Chapelfield Barn	40

Education	Churchill College	48
	Harvey Court	52
	Robinson College	56
	Alison Richard Building	58
	Birkbeck College	60

Public	Nottingham Contemporary	66
	De La Warr Pavilion	72
	Anglesey Abbey	76

Commercial	Landex Offices	80
	British Gaskets	84
	Sealey Power Products	88

About / Contact Details 92

Residential

The Dune House	08
Stone Farm	12
Accordia Housing	16
Valley Farm House	20
Rivercote	26
Preston Manor	32
Mill Lane	36
Chapelfield Barn	40

The Dune House

This award-winning holiday residence was the result of a collaboration between **JVA and Mole Architects**. The house was completed in 2010 as part of the **Living Architecture** project, which offers guests the opportunity to stay in one of several landmark buildings in fantastic locations.



The cross-laminated
timber geometry appears
to float over the dunes,
on a **linear plane of glass**



Stone Farm

Nestled in established woodland upon a hillside, this bespoke residence by **Wincer Kievenaar** enjoys stunning views out towards historic Lavenham and the idyllic Suffolk countryside. Set into the landscape, the house is optimised to enjoy the views on all three levels, with the lower storey comprising private, luxurious guest accommodation.





Accordia

Accordia Living, winner of the 2008 Stirling Prize, has been widely acknowledged as an exemplar project for successful, contemporary housing. Since the completion of the First phase in 2006, the development, with its diverse mixture of typologies and spaces, has matured superbly and is complimented by a range of green spaces and an avenue of existing mature trees.

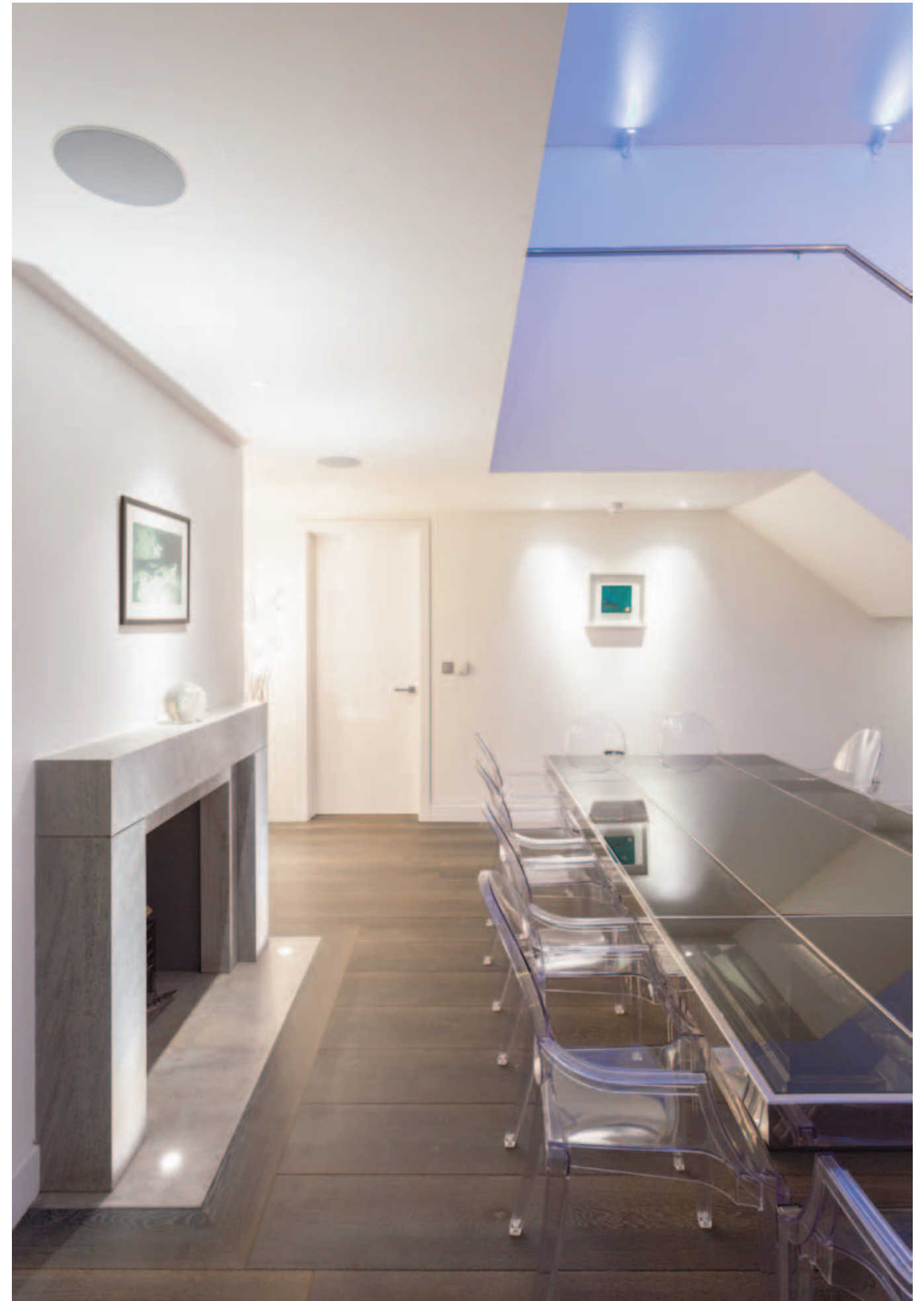
Accordia was designed by a collaboration of three award winning architects; **Feilden Clegg Bradley, Maccleanor Lavington & Alison Brooks Architects**. It has become a definitive reference for development of this type.





Valley Farm

A crisp, contemporary private residence sited deep in established mature woodland, by Suffolk-based **Wincer Kievenaar Architects**.





A colourful, customizable lighting scheme was designed and installed by **Darklight Design**, adding visual drama and fun to the minimal interiors.





Rivercote

A contemporary private waterfront residence in Woodbridge,
by Suffolk-based **Patrick Allen Architects**.







This contemporary replacement dwelling, appropriate for its important riverside site, was designed by **Patrick Allen Architects**. Drawing on the commercial contextual precedent, the dwelling takes on the form of a riverside workshop, with a crisp glazed first floor sitting on a solid tapered masonry plinth at ground level.

Preston Manor

This grand country house in Suffolk was subject to an extensive and sensitive restoration, with new extensions and an orangery by **Wincer Kievenaar Architects**.





Mill Lane

This private residence in Cambridgeshire by award-winning **Mole Architects** was designed as two traditional pitched buildings, splayed around an entrance yard. The wings are joined by a glazed link building, which forms the kitchen.

The narrow, vertical, silvered weatherboarding, grey fenestration and pale pantiles lend this house a soft, warm materiality, in harmony with the existing clunch wall which runs around the perimeter of the site.





Chapelfield Barn

This private residence in Dalham, Suffolk, by **Wincer Kievenaar Architects**, was designed with a traditional agricultural aesthetic. However, it offers luxurious, contemporary living accommodation, with stunning views out across open fields.









Education

Churchill College	48
Harvey Court	52
Robinson College	56
Alison Richard Building	58
Birkbeck College	60



Churchill College

Churchill College, designed by **Richard Sheppard** of **Sheppard, Robson and Partners**, was completed by 1968 with nine main residential courts, separate graduate flats and a central building consisting of the dining hall, buttery, combination rooms and offices.





The image shows the exterior of a brick building, identified as Harvey Court. A large, dark evergreen tree's branches hang down from the top of the frame, partially obscuring the building. The building is constructed of light-colored bricks. A prominent feature is a window with vertical wooden slats. Below the window, there are two small, square, light-colored objects mounted on the wall. In the foreground, there is a paved sidewalk and a green lawn. A wooden bench is positioned on the sidewalk, and a dark, cylindrical trash can stands next to it. The scene is brightly lit, suggesting a sunny day.

Harvey Court

Harvey Court (1961-62) is a Grade II* listed student residence block in Cambridge designed by **Colin St. John Wilson** and **Patrick Hodgkinson**. **Levitt Bernstein** completed an extensive and sympathetic refurbishment of the building in 2011, improving access and renovating the accommodation and external finishes.



Robinson College

Designed by the Scottish architectural firm **Gillespie, Kidd & Coia**, Robinson's main buildings are distinctive for the generous use of red bricks in their construction.



Alison Richard Building

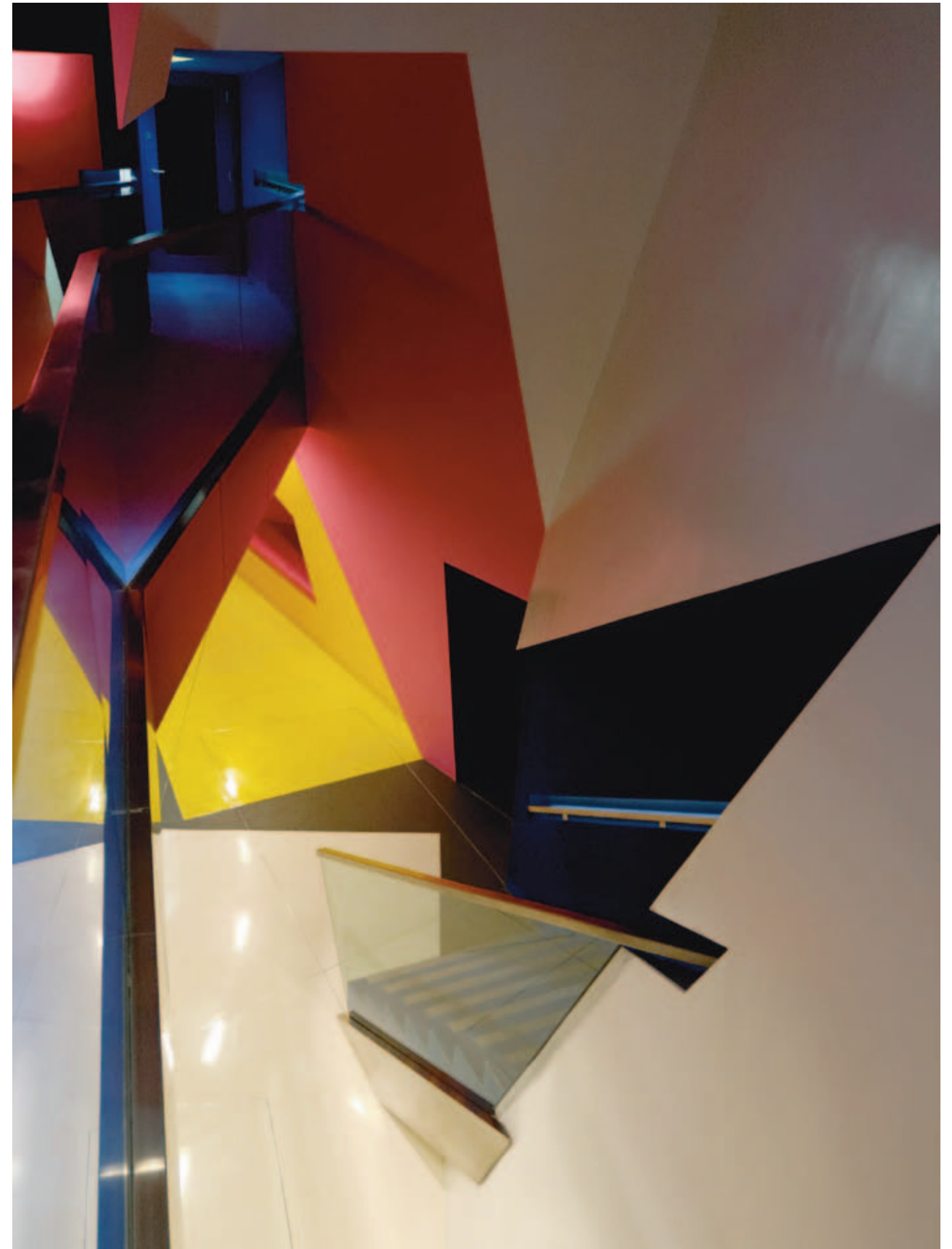
A recent addition to the Sidgewick Site in Cambridge,
designed by **Nicholas Hare Architects**.





Birkbeck College

A prestigious research facility designed by **Surface Architects**, within the School of History of Art, Film and Visual Media in Gordon Square, London.



Located within a Grade II listed terrace once occupied by Virginia Woolf and the Bloomsbury Group, the project is a refurbishment of the basement, ground floor and the utilitarian 1970's extension. It includes a unique state-of-the-art 80 seat cinema auditorium, media study suite, seminar/tutorial rooms and offices for academics.

Public

Nottingham Contemporary	66
De La Warr Pavilion	72
Anglesey Abbey	76



East Beach Cafe, Littlehampton
David Chipperfield Architects

Nottingham Contemporary

Galleries, Exhibition Spaces & Auditorium in the heart of
Nottingham's historic lace market, by **Caruso St. John Architects.**

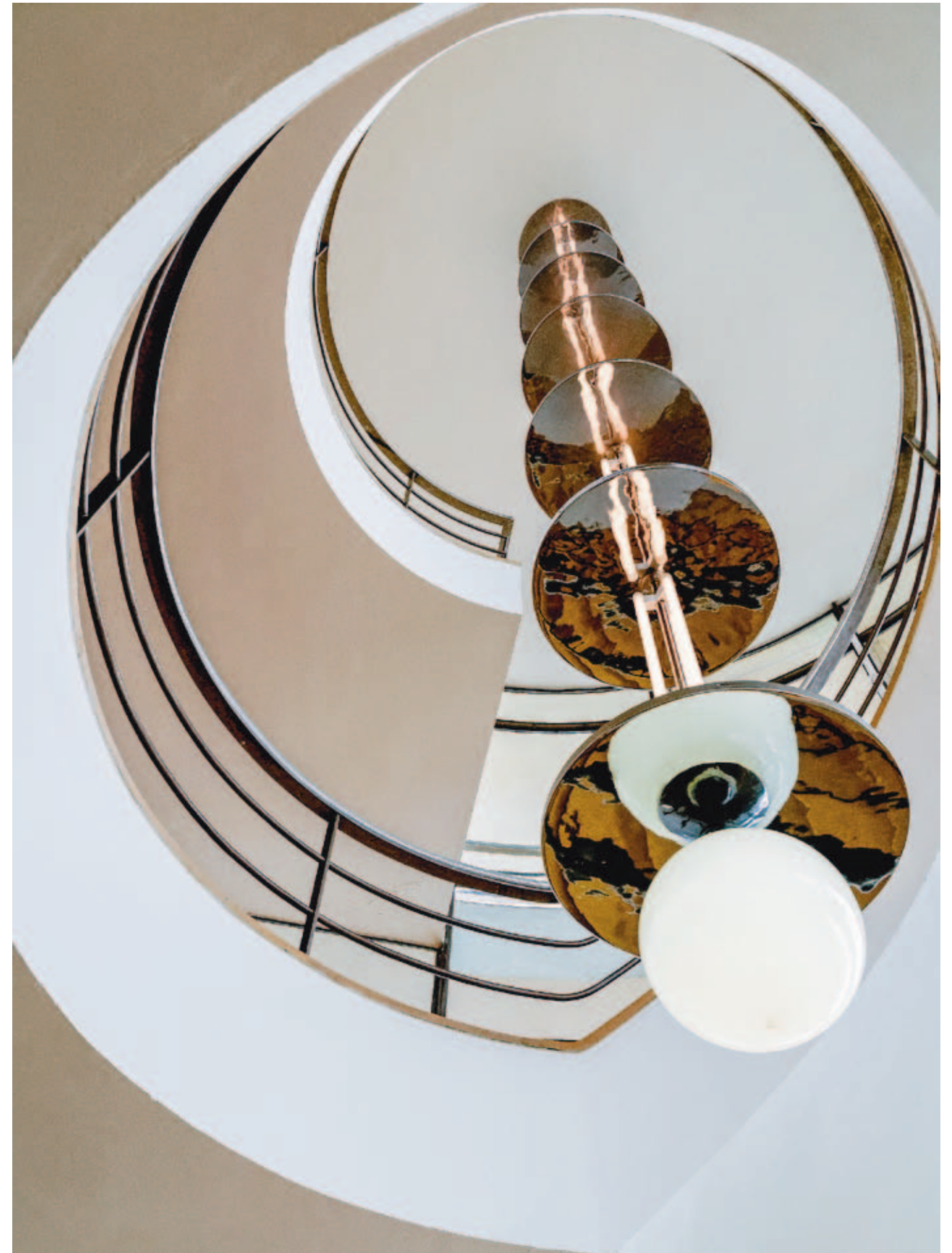






De La Warr Pavilion

An iconic Modernist pavilion on the East Sussex coast, completed in 1935 by **Erich Mendelsohn** and **Serge Chermayeff**.



The pavilion features minimal geometric forms with intricate details; this sculptural multi-storey luminaire is orbited by the flowing main staircase.



Anglesey Abbey

Cowper Griffith Architects designed this new visitor centre for the National Trust property in Cambridgeshire, which was completed in 2008. The accommodation includes offices, administration and maintenance facilities, a shop and a large restaurant. The building was awarded the RIBA Spirit of Innovation Award in 2008.

The architectural form and materiality of the centre is closely related to agricultural buildings, but the corrugated aluminium sheet and timber louvres have been utilised and detailed very precisely, enhancing the visual simplicity of the composition. The linear, orthogonal layout makes the centre easy to navigate for visitors.



Commercial

Landex Offices, Ipswich
British Gaskets, Sudbury
Sealey Power Products

80
84
88



Landex

A distinctive redevelopment of an existing industrial shell into a contemporary landmark office building, designed by **Wincer Kievenaar Architects** for Ipswich-based property company, **Landex**.





The new Landex offices in Ipswich, designed by **Wincer Kievenaar Architects**



British Gaskets





The latest phase of new production and storage facilities was recently completed in Sudbury for British Gaskets. The new warehouse and offices were designed by **Wincer Kievenaar Architects**.



Sealey Power Products

A new customer returns facility was recently completed in Bury St Edmunds for tool manufacturer Sealey Power Products, designed by **Wincer Kievenaar Architects**.





Matthew Smith is a freelance architectural photographer based in East Anglia.

Experience Having studied architecture at degree and post-graduate level before working in practice as an architectural assistant for the past five years, I've developed an ability to read spaces and buildings effectively and creatively. With an eye for light, composition, texture and proportion, I work with architects, designers, artists and estate agents to visually document their work for commercial and publication purposes.

Technical Every photograph is taken on a levelled tripod with a geared head. This enables precise composition and framing, maximum image sharpness and the correction of perspective distortion in-camera with specialist tilt-shift lenses. Every selected frame is carefully processed to remove chromatic aberrations, lens distortions, vignetting and other anomalies. Exposure, saturation, and white balance are adjusted manually, whilst erroneous objects, weathering or building damage can be removed from images or repaired with professional grade post-processing.

Pricing Fees will vary, depending on the size of project and the required scope of work. As a guide, charges start at around £300 plus expenses for external photographs of a domestic scale project. Free, no obligation quotations are available on request. Please get in touch for further advice, or to discuss your requirements.

Further Information I am always interested to hear about new projects throughout the UK. If you would like to find out more or would like to discuss a future project, please get in touch by using the details overleaf.

www.matthewsmitharchitecture.co.uk



Matthew Smith Architectural Photography

31 Fordham Road
Soham
Ely
Cambridgeshire
CB7 5AH

+44 (0)7540 769 814
+44 (0)1353 720 491

Email matthewsmitharchitecture@yahoo.com
Web www.matthewsmitharchitecture.com
Tweet @mattsmith_photo

The graphic design of this document and all photographs contained are by Matthew Smith.

Matthew Smith does not imply nor claim any design credit for any of the architectural building works contained within this document.

